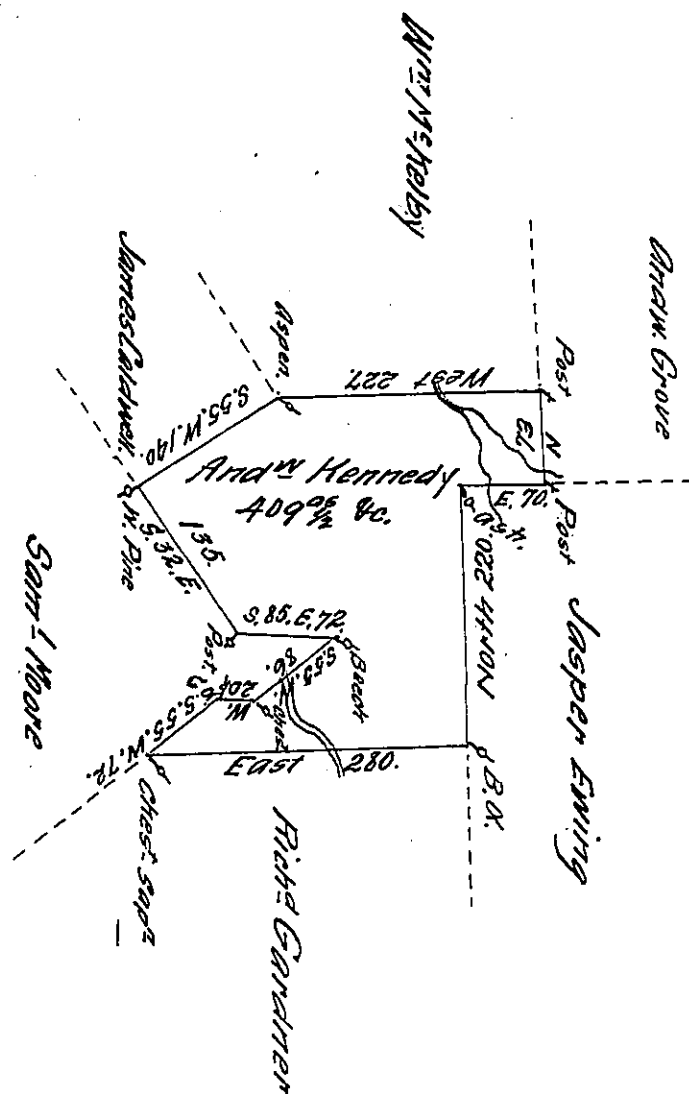


X



A draft of a tract of land called _____ Situate Near Land
 Surveyed for Robt Gray in the County of Luzerne Con-
 taining four Hundred and nine acres $\frac{1}{2}$ & allowance Sur-
 veyed the 10th day of August 1793 by virtue of a warrant
 dated the 4th Day of January 1793

by W^m Gray D.S.

To Daniel Brodhead Esq^r
 Surv^r Gen^l

IN TESTIMONY that the above is a copy of the original remaining on file in
 the Department of Internal Affairs of Pennsylvania, made
 conformably to an Act of Assembly approved the 16th day of
 February, 1833, I have hereunto set my Hand and caused
 the Seal of said Department to be affixed at Harrisburg,
 this ninth day of March 1911.

Henry Houch
 Secretary of Internal Affairs.